

*Welcome!*



On the weekend before Thanksgiving, a group of artists, living and working their craft on the seacoast of New Hampshire, open their home studios to the public for a very special holiday arts tour.

As the original arts tour on the seacoast, we've been doing this for twelve years now! Some of us have been in it since the beginning; others happily joining in along the way.

For us, the tour is a chance to slow down, visit with old friends, share stories, and meet new people who share our interests.

For you, it's a time to enjoy our town, explore our studios, and find unique hand-crafted gifts to get a jump on your holiday shopping...and maybe pick up a little something special for yourself, too!

So, give us a visit. You don't need to buy a ticket or pay an entry fee - our doors are open. *We look forward to seeing you!*

  
We are grateful to the Piscataqua Savings Bank  
for their support as a sponsor to this year's  
Portsmouth Holiday Arts Tour.

911 Greenland Road • Portsmouth, NH 03801



**Portsmouth Holiday**  
*Arts Tour*

**November 16, 17 & 18**

[www.PortsmouthArtsTour.com](http://www.PortsmouthArtsTour.com)



**12<sup>th</sup> annual**

# Portsmouth Holiday *Arts Tour*



**November 16, 17 & 18**

# visit artists' home studios



Studio **3**  
782 Middle Road

## Neil Troost

Fine art photography  
[www.troostartphoto.com](http://www.troostartphoto.com)  
[neil@troostartphoto.com](mailto:neil@troostartphoto.com)  
603.436.0865



Studio **4**  
31 Boss Avenue

## Bruce Iverson

Traditional & contemporary  
Asian brush painting  
[www.iversonarts.com](http://www.iversonarts.com)  
[iversonarts@gmail.com](mailto:iversonarts@gmail.com)  
603.433.8484

Studio **5**  
178 Highland Street

## Tess Feltes

Wildlife art  
[www.tessfeltes.com](http://www.tessfeltes.com)  
[tfeltes@comcast.net](mailto:tfeltes@comcast.net)  
603.431.1313



Studio **6**  
220 South Street

## Kristina Logan

Lampwork, glass  
beads & jewelry  
[www.kristinalogan.com](http://www.kristinalogan.com)  
[kristina@kristinalogan.com](mailto:kristina@kristinalogan.com)  
603.430.2020



## Reg Logan

Ceramics & insect jewelry  
[reg.e.logan@gmail.com](mailto:reg.e.logan@gmail.com)  
603.828.5059



Studio **2**  
78 Peverly Hill Road

## Dyanna Smith

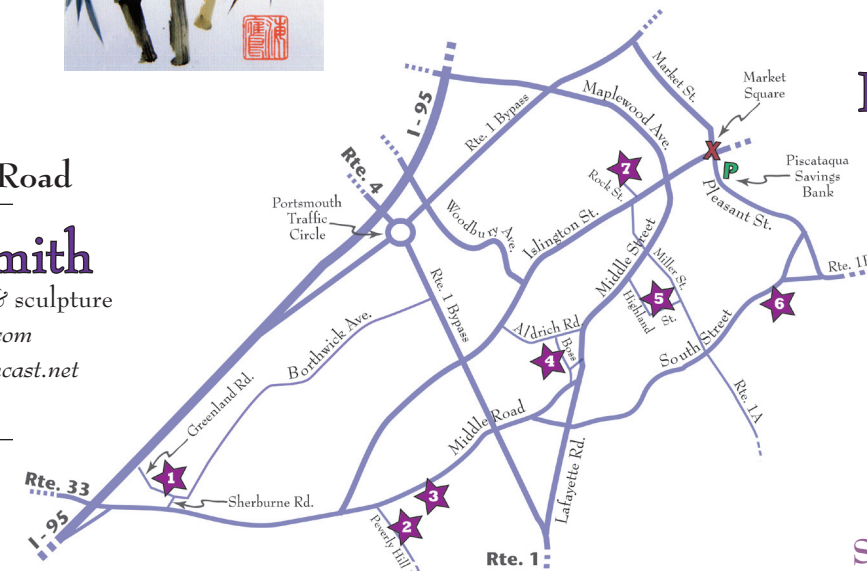
Glass jewelry, beads & sculpture  
[www.milkweedcottage.com](http://www.milkweedcottage.com)  
[milkweedcottage@comcast.net](mailto:milkweedcottage@comcast.net)  
603.781.1963



Studio **1**  
911 Greenland Road

## Maureen Mills & Steven Zoldak

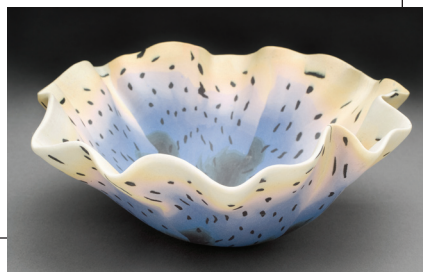
Handthrown stoneware & porcelain  
[potters@sliptrail.com](mailto:potters@sliptrail.com)  
603.436.3818



*Town Start*

## Karen Orsillo

Colored porcelain pots & jewelry  
[korsillo@comcast.net](mailto:korsillo@comcast.net)



Studio **7**  
66 Rock Street

## Peter Happny & Lisa Grey

Blacksmithing, textile collage & printmaking  
[www.peterhappny.com](http://www.peterhappny.com)  
[www.lisagrey.com](http://www.lisagrey.com)  
[lisa@lisagrey.com](mailto:lisa@lisagrey.com)  
603.436.4859



You can also find a Google route map, with studio markers, at [www.PortsmouthArtsTour.com](http://www.PortsmouthArtsTour.com)!